



CONSPIT FP Rig

Quick Guide



Ensu (Shanghai) Electronic Technology Co., Ltd

Conspit has already pre-installed base mounting plate of pedals/wheelbase, seat, and seat position adjustment mechanism.



Demonstrated with CGP twin pedal figure 1

The mounting plate for pedals is fixed on the side plate of the rig by four M8 bolts, and the angle is adjustable.

1. Using a pedal with the pedal surface and the pedal base close to vertical (such as products of CONSPIT, HE, etc.), it is recommended to install the mounting plate in parallel.(Figure 2)



Figure 2

2. Using a pedal with a larger angle between the pedal surface and the base (such as products of FANATEC, Thrustmaster and Logitech), it is recommended to adjust the installation angle of the mounting plate to make the pedal surface as perpendicular to the ground as possible. (Figure 3)

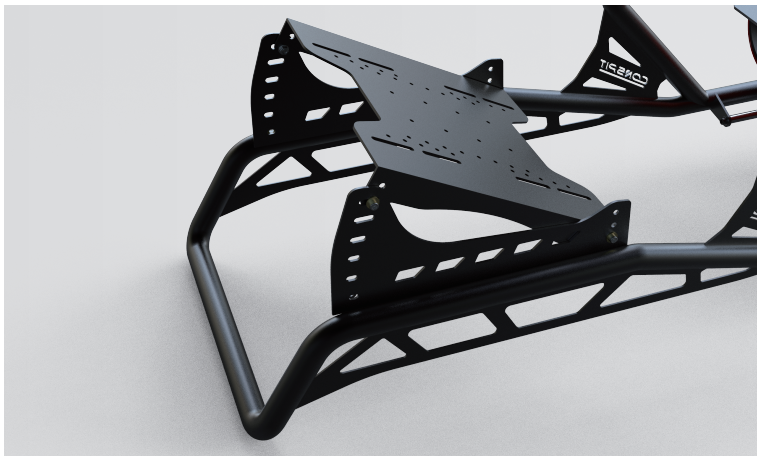


figure 3

Pedals of CONSPIT, FANATEC, Thrustmaster, HE can be mounted directly. For other products, please refer to the mounting templates of the plate.

(Figure 4)

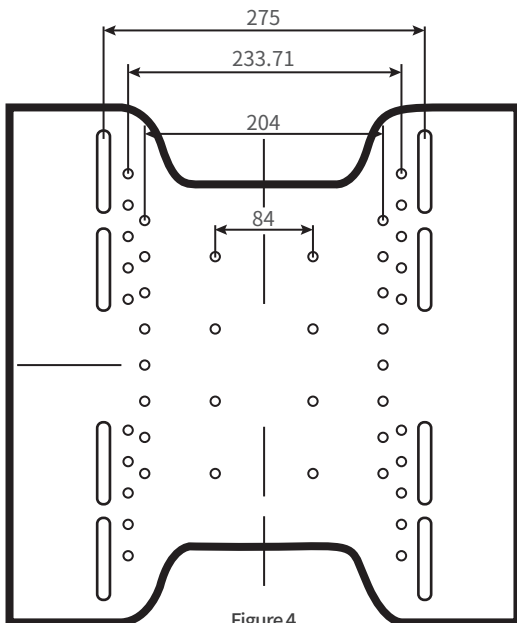


Figure 4

*When installing the mounting plate, tighten the bolts until there is no gap between the side plate on the rig and the side of the mounting plate.

(Figure 5)

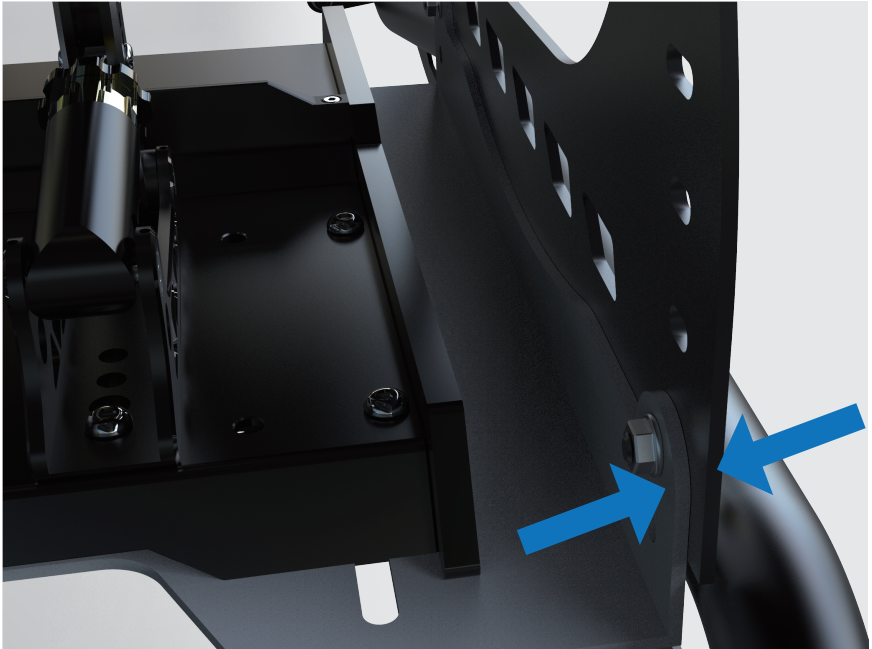


Figure 5

* It is recommended to purchase CONSPIT CGP or CPP series twin pedal to be used with the FP RIG to get the best experience.

1. Using wheelbase whose steering wheel is nearly perpendicular to the bottom surface of the base (such as FANATEC, Simagic, Simucube), it is recommended to install the base plate in parallel. (Figure 6)



Figure 6

2. Using wheelbase with a larger angle between the steering wheel and the bottom surface of the base (such as Thrustmaster, Logitech wheelbase products). It is recommended to adjust the mounting angle of the bottom plate to make the steering wheel have a proper angle. (Figure 7)



Figure7

Wheelbases of FANATEC, THRUSTMASTER, SIMUCUBE, LOGITECH can be mounted directly. For other products, please refer to the mounting templates of the plate. (Figure 8)

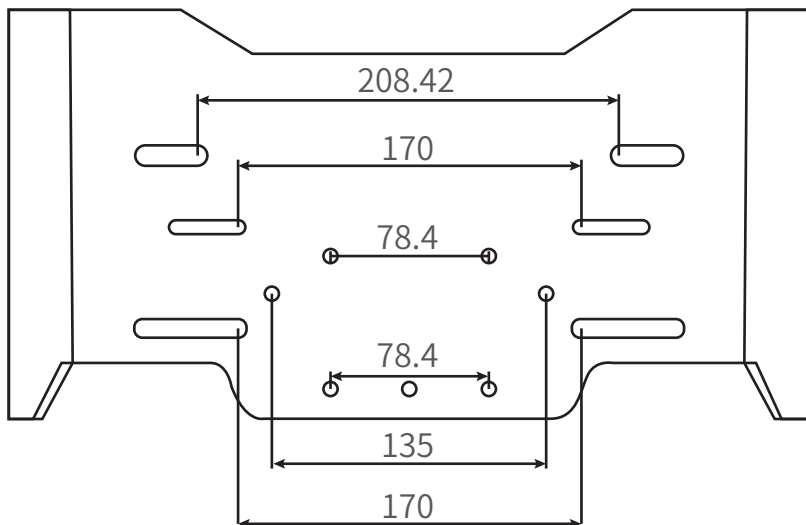


Figure 8

*When installing the mounting plate, tighten the bolts until there is no gap between the side plate on the rig and the side of the mounting plate.

(Figure 9)



Figure 9

pneumatic seat rail system

The pneumatic slide system is a patented CONSPIT structure, which has a high-strength locking force while you can easily adjust the seat position front and rear.

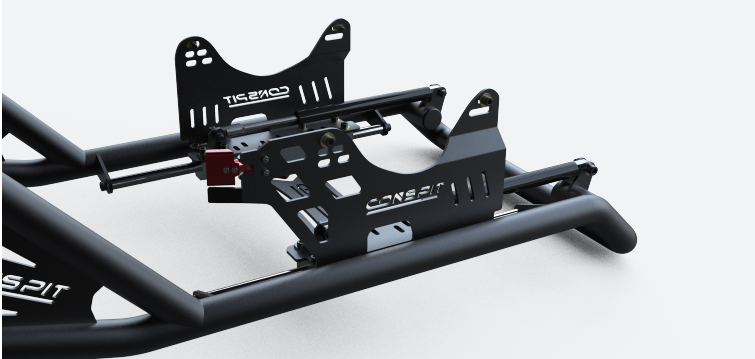


Figure 10

Seat position adjustment

The red handle shown in (Figure 10) is used to adjust the position of the seat. When the handle is not pulled (Figure 11), the pneumatic system is in the locked state. When the handle is pulled (Figure 12), the pneumatic system is active and pushes the seat forward.



Figure 11



The pneumatic system is now locked figure 12



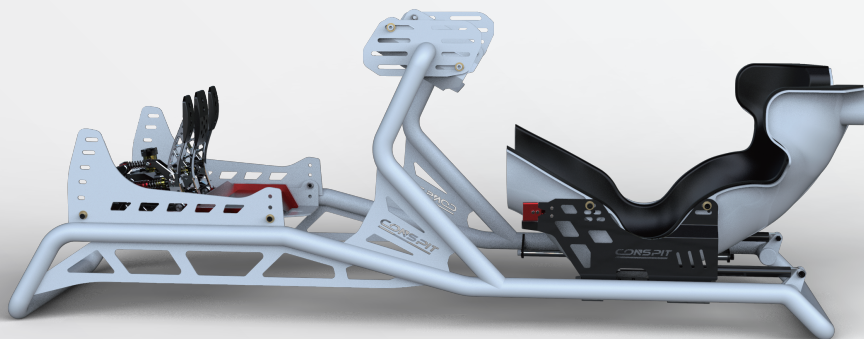
Pull the handle, and the pneumatic system is activated figure 13

Safety Warning

- * Do not pull the handle when there is no load on the seat, please be sure to sit on the seat to adjust the seat position.
- * This mechanism is not suitable for children under 14 to use.

Adjusting Procedure

1. Sit on the seat and place your feet in the normal driving position (please keep your feet on the pedal plane and get well supported).
2. Press the brake pedal with your left foot and pull the adjustment handle. At this time, the pneumatic system will push the seat forward.
3. When you need the seat to move backwards, step on the brake pedal and move backwards.
4. To facilitate entry and exit, please adjust the seat backward to the end each time before getting off the seat.





CONSPIT.COM

#GET YOURSELF IMMERSED